

## Understanding the Changes to the Checklist

### *Changes to the common or scientific names*

Any departure from the Christidis and Boles (1994) Checklist with regard to either the common name or scientific name has been highlighted in orange type.

### *Subscripts after the common name:*

E = extinct

V = vagrant to Australia (fewer than 10 records)

I = introduced to Australia

A = Ashmore Reef

AAT = Australian Antarctic Territory

C = Christmas Island

CK = Cocos Keeling Islands

H = Heard Island

LH = Lord Howe Island

M = Macquarie Island

N = Norfolk Island

TS = Torres Strait Islands

## References

Christidis, L. and W.E. Boles. (1994) *The Taxonomy and Species of Birds of Australia and its Territories*. RAOU Monograph No. 2. Royal Australasian Ornithologists Union, Melbourne.

Christidis, L. and W.E. Boles. (2008) *Systematics and Taxonomy of Australian Birds*. CSIRO Publishing, Melbourne.



**Birds Australia**  
CONSERVATION THROUGH KNOWLEDGE

Common Name	Scientific Name	Atlas Number	Chistidis & Boles (1994)
<b>STRUTHIONIFORMES</b>			
<b>Struthionidae</b>			
Ostrich <sup>IE?</sup>	<i>Struthio camelus</i>	928	
<b>CASUARIIFORMES</b>			
<b>Casuariidae</b>			
Southern Cassowary	<i>Casuarius casuarius</i>	2	
Emu	<i>Dromaius novaehollandiae</i>	1	
King Island Emu <sup>E</sup>	<i>Dromaius ater</i>	740	
Kangaroo Island Emu <sup>E</sup>	<i>Dromaius baudinianus</i>	741	
<b>GALLIFORMES</b>			
<b>Megapodiidae</b>			
Australian Brush-turkey	<i>Alectura lathamii</i>	8	
Malleefowl	<i>Leipoa ocellata</i>	7	
Orange-footed Scrubfowl	<i>Megapodius reinwardt</i>	6	
<b>Numididae</b>			
Helmeted Guineafowl <sup>l</sup>	<i>Numida meleagris</i>		supplementary list
<b>Odontophoridae</b>			
California Quail <sup>l</sup>	<i>Callipepla californica</i>	901	
<b>Phasianidae</b>			
Stubble Quail	<i>Coturnix pectoralis</i>	9	
Brown Quail	<i>Coturnix ypsilophora</i>	11	
King Quail	<i>Excalfactoria chinensis</i>	12	<i>Coturnix</i>
Indian Peafowl <sup>l</sup>	<i>Pavo cristatus</i>	903	
Red Junglefowl <sup>l</sup>	<i>Gallus gallus</i>	902	
Green Junglefowl <sup>CK/I</sup>	<i>Gallus varius</i>	752	supplementary list
Common Pheasant <sup>l</sup>	<i>Phasianus colchicus</i>	950	
Wild Turkey <sup>l</sup>	<i>Meleagris gallopavo</i>	778	
<b>ANSERIFORMES</b>			
<b>Anseranatidae</b>			
Magpie Goose	<i>Anseranas semipalmata</i>	199	
<b>Anatidae</b>			
Spotted Whistling-Duck	<i>Dendrocygna guttata</i>	745	not on list
Plumed Whistling-Duck	<i>Dendrocygna eytoni</i>	205	



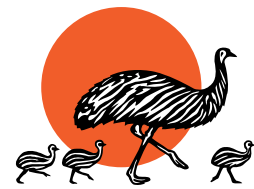
Wandering Whistling-Duck	<i>Dendrocygna arcuata</i>	204	
Musk Duck	<i>Biziura lobata</i>	217	
Freckled Duck	<i>Stictonetta naevosa</i>	214	
Cape Barren Goose	<i>Cereopsis novaehollandiae</i>	198	
Black Swan	<i>Cygnus atratus</i>	203	
Mute Swan <sup>l</sup>	<i>Cygnus olor</i>	906	
Canada Goose <sup>VI</sup>	<i>Branta canadensis</i>	799	
Radjah Shelduck	<i>Tadorna radjah</i>	206	
Australian Shelduck	<i>Tadorna tadornoides</i>	207	
Paradise Shelduck <sup>LHV</sup>	<i>Tadorna variegata</i>	798	
Australian Wood Duck	<i>Chenonetta jubata</i>	202	
Pink-eared Duck	<i>Malacorhynchus membranaceus</i>	213	
Cotton Pygmy-goose	<i>Nettapus coromandelianus</i>	200	
Green Pygmy-goose	<i>Nettapus pulchellus</i>	201	
Garganey	<i>Anas querquedula</i>	209	
Australasian Shoveler	<i>Anas rhynchotis</i>	212	
Northern Shoveler <sup>V</sup>	<i>Anas clypeata</i>	905	
Grey Teal	<i>Anas gracilis</i>	211	
Chestnut Teal	<i>Anas castanea</i>	210	
Northern Pintail <sup>V</sup>	<i>Anas acuta</i>	800	
Kerguelen Pintail <sup>AA1V</sup>	<i>Anas eatoni</i>	759	not on list
Northern Mallard <sup>l</sup>	<i>Anas platyrhynchos</i>	948	Mallard
Pacific Black Duck	<i>Anas superciliosa</i>	208	
Hardhead	<i>Aythya australis</i>	215	
Blue-billed Duck	<i>Oxyura australis</i>	216	
<b>PHAETHONTIFORMES</b>			new order; split from Pelecaniformes
<b>Phaethontidae</b>			
Red-tailed Tropicbird	<i>Phaethon rubricauda</i>	107	
White-tailed Tropicbird	<i>Phaethon lepturus</i>	108	
<b>PODICIPEDIFORMES</b>			
<b>Podicipedidae</b>			
Australasian Grebe	<i>Tachybaptus novaehollandiae</i>	61	
Little Grebe <sup>V</sup>	<i>Tachybaptus ruficollis</i>	3004	not on list
Hoary-headed Grebe	<i>Poliiocephalus poliocephalus</i>	62	



Great Crested Grebe	<i>Podiceps cristatus</i>	60	
<b>PHOENICOPTERIFORMES</b>			
<b>Phoenicopteridae</b>			
Greater Flamingo <sup>CKV</sup>	<i>Phoenicopus ruber</i>	777	
<b>COLUMBIFORMES</b>			
<b>Columbidae</b>			
Rock Dove	<i>Columba livia</i>	957	
White-throated Pigeon <sup>LF/E</sup>	<i>Columba vitiensis</i>	756	
White-headed Pigeon	<i>Columba leucomela</i>	28	
Barbary Dove	<i>Streptopelia roseogrisea</i>		not on list
Red Collared Dove <sup>CV</sup>	<i>Streptopelia tranquebarica</i>		not on list
Laughing Dove <sup>l</sup>	<i>Streptopelia senegalensis</i>	988	Laughing Turtle-Dove
Spotted Dove <sup>l</sup>	<i>Streptopelia chinensis</i>	989	Spotted Turtle-Dove
Brown Cuckoo-Dove	<i>Macropygia amboinensis</i>	29	
Emerald Dove	<i>Chalcophaps indica</i>	33	
Common Bronzewing	<i>Phaps chalcoptera</i>	34	
Brush Bronzewing	<i>Phaps elegans</i>	35	
Flock Bronzewing	<i>Phaps histrionica</i>	36	
Crested Pigeon	<i>Ocyphaps lophotes</i>	43	
Spinifex Pigeon	<i>Geophaps plumifera</i>	42	
Partridge Pigeon	<i>Geophaps smithii</i>	40	
Squatter Pigeon	<i>Geophaps scripta</i>	39	
White-quilled Rock-Pigeon	<i>Petrophassa albipennis</i>	37	
Chestnut-quilled Rock-Pigeon	<i>Petrophassa rufipennis</i>	38	
Diamond Dove	<i>Geopelia cuneata</i>	31	
Peaceful Dove	<i>Geopelia striata</i>	30	
Bar-shouldered Dove	<i>Geopelia humeralis</i>	32	
Wonga Pigeon	<i>Leucosarcia picata</i>	44	<i>L. melanoleuca</i>
Norfolk Island Ground-Dove <sup>NE</sup>	<i>Gallicolumba norfolciensis</i>		
Banded Fruit-Dove	<i>Ptilinopus cinctus</i>	24	
Wompoo Fruit-Dove	<i>Ptilinopus magnificus</i>	25	
Superb Fruit-Dove	<i>Ptilinopus superbus</i>	23	
Rose-crowned Fruit-Dove	<i>Ptilinopus regina</i>	21	
Orange-bellied Fruit-Dove <sup>TSV</sup>	<i>Ptilinopus iozonus</i>		not on list



Elegant Imperial-Pigeon <sup>V</sup>	<i>Ducula concinna</i>	769	
Christmas Island Imperial-Pigeon <sup>C</sup>	<i>Ducula whartoni</i>	805	
Collared Imperial-Pigeon <sup>TSV</sup>	<i>Ducula mullerii</i>	793	
Pied Imperial-Pigeon	<i>Ducula bicolor</i>	26	
Topknot Pigeon	<i>Lopholaimus antarcticus</i>	27	
New Zealand Pigeon <sup>NE</sup>	<i>Hemiphaga novaeseelandiae</i>	737	
<b>CAPRIMULGIFORMES</b>			
<b>Podargidae</b>			
Tawny Frogmouth	<i>Podargus strigoides</i>	313	
Papuan Frogmouth	<i>Podargus papuensis</i>	316	
Marbled Frogmouth	<i>Podargus ocellatus</i>	314	
<b>Eurostopodidae</b>			
White-throated Nightjar	<i>Eurostopodus mystacalis</i>	330	new family; split from Caprimulgidae
Spotted Nightjar	<i>Eurostopodus argus</i>	331	
<b>Caprimulgidae</b>			
Large-tailed Nightjar	<i>Caprimulgus macrurus</i>	332	
Savanna Nightjar <sup>CV</sup>	<i>Caprimulgus affinis</i>	765	
Grey Nightjar <sup>AVV</sup>	<i>Caprimulgus indicus</i>		not on list
<b>APODIFORMES</b>			
<b>Aegothelidae</b>			
Australian Owlet-nightjar	<i>Aegotheles cristatus</i>	317	moved from Caprimulgiformes
<b>Apodidae</b>			
Glossy Swiftlet <sup>V</sup>	<i>Collocalia esculenta</i>	882	
Linchi Swiftlet <sup>C</sup>	<i>Collocalia linchi</i>		treated as conspecific with Glossy Swiftlet <i>C. esculenta</i>
Australian Swiftlet	<i>Aerodramus terrareginae</i>	333	treated as conspecific with White-rumped Swiftlet <i>Collocalia spodiopygius</i>
Uniform Swiftlet <sup>V</sup>	<i>Aerodramus vanikorensis</i>	881	
White-throated Needletail	<i>Hirundapus caudacutus</i>	334	
Papuan Spine-tailed Swift <sup>TSV</sup>	<i>Mearnsia novaeguineae</i>		not on list
Fork-tailed Swift	<i>Apus pacificus</i>	335	
House Swift <sup>V</sup>	<i>Apus affinis</i>	828	
<b>PROCELLARIFORMES</b>			
<b>Hydrobatidae</b>			
Swinhoe's Storm-Petrel <sup>V</sup>	<i>Hydrobates monorhis</i>	812	not on list
Leach's Storm-Petrel <sup>V</sup>	<i>Hydrobates leucorhoa</i>	911	<i>Oceanodroma</i>



Tristram's Storm-Petrel <sup>V</sup>	<i>Hydrobates tristrami</i>	811	not on list
Matsudaira's Storm-Petrel <sup>V,CV</sup>	<i>Hydrobates matsudairae</i>	802	<i>Oceanodroma</i>
<b>Oceanitidae</b>			split from Hydrobatidae
Wilson's Storm-Petrel	<i>Oceanites oceanicus</i>	63	
Grey-backed Storm-Petrel	<i>Garrodia nereis</i>	64	
White-faced Storm-Petrel	<i>Pelagodroma marina</i>	65	
Black-bellied Storm-Petrel	<i>Fregetta tropica</i>	66	
White-bellied Storm-Petrel <sup>V,LH</sup>	<i>Fregetta grallaria</i>	944	
<b>Diomedidae</b>			
Wandering Albatross	<i>Diomedea exulans</i>	86	
Royal Albatross	<i>Diomedea epomophora</i>	974	
Laysan Albatross <sup>V</sup>	<i>Phoebastria immutabilis</i>	738	<i>Diomedea</i> ; supplementary list
Black-browed Albatross	<i>Thalassarche melanophris</i>	88	<i>Diomedea</i>
Shy Albatross	<i>Thalassarche cauta</i>	91	<i>Diomedea</i>
Grey-headed Albatross	<i>Thalassarche chrysostoma</i>	90	<i>Diomedea</i>
Yellow-nosed Albatross	<i>Thalassarche chlororhynchos</i>	89	<i>Diomedea</i>
Buller's Albatross	<i>Thalassarche bulleri</i>	931	<i>Diomedea</i>
Sooty Albatross	<i>Phoebastria fusca</i>	92	
Light-mantled Sooty Albatross	<i>Phoebastria palpebrata</i>	93	
<b>Procellariidae</b>			
Southern Giant-Petrel	<i>Macronectes giganteus</i>	929	
Northern Giant-Petrel	<i>Macronectes halli</i>	937	
Southern Fulmar	<i>Fulmarus glacialisoides</i>	74	
Antarctic Petrel	<i>Thalassoica antarctica</i>	949	
Cape Petrel	<i>Daption capense</i>	80	
Snow Petrel <sup>HV</sup>	<i>Pagodroma nivea</i>	984	
Blue Petrel	<i>Halobaena caerulea</i>	81	
Broad-billed Prion	<i>Pachyptila vittata</i>	82	
Salvin's Prion	<i>Pachyptila salvini</i>	941	
Antarctic Prion	<i>Pachyptila desolata</i>	84	
Slender-billed Prion	<i>Pachyptila belcheri</i>	942	
Fairy Prion	<i>Pachyptila turtur</i>	83	
Fulmar Prion <sup>V,H</sup>	<i>Pachyptila crassirostris</i>	947	
White-chinned Petrel	<i>Procellaria aequinoctialis</i>	915	



Westland Petrel <sup>V</sup>	<i>Procellaria westlandica</i>	916	
Black Petrel	<i>Procellaria parkinsoni</i>	917	
Grey Petrel	<i>Procellaria cinerea</i>	73	
Bulwer's Petrel <sup>V</sup>	<i>Bulweria bulwerii</i>	776	
Jouanin's Petrel <sup>V</sup>	<i>Bulweria fallax</i>	762	not on list
Wedge-tailed Shearwater	<i>Ardenna pacifica</i>	69	<i>Puffinus pacific us</i>
Buller's Shearwater	<i>Ardenna bulleri</i>	975	<i>Puffinus</i>
Flesh-footed Shearwater	<i>Ardenna carneipes</i>	72	<i>Puffinus</i>
Pink-footed Shearwater <sup>V</sup>	<i>Ardenna creatopus</i>	772	<i>Puffinus</i>
Great Shearwater <sup>V</sup>	<i>Ardenna gravis</i>	771	<i>Puffinus</i>
Sooty Shearwater	<i>Ardenna grisea</i>	70	<i>Puffinus grise us</i>
Short-tailed Shearwater	<i>Ardenna tenuirostris</i>	71	<i>Puffinus</i>
Streaked Shearwater	<i>Calonectris leucomelas</i>	853	
Manx Shearwater <sup>V</sup>	<i>Puffinus puffinus</i>	914	
Newell's Shearwater <sup>V</sup>	<i>Puffinus newelli</i>	739	not on list
Fluttering Shearwater	<i>Puffinus gavia</i>	68	
Hutton's Shearwater	<i>Puffinus huttoni</i>	913	
Audubon's Shearwater <sup>V</sup>	<i>Puffinus lherminieri</i>	912	
Little Shearwater	<i>Puffinus assimilis</i>	67	
Tahiti Petrel	<i>Pseudobulweria rostrata</i>	920	
Kerguelen Petrel	<i>Lugensa brevirostris</i>	935	
Barau's Petrel <sup>V</sup>	<i>Pterodroma barau</i>	775	
Juan Fernandez Petrel <sup>V</sup>	<i>Pterodroma externa</i>	810	
Kermadec Petrel <sup>V,LRN</sup>	<i>Pterodroma neglecta</i>	922	
Herald Petrel	<i>Pterodroma heraldica</i>	921	treated as conspecific with Herald Petrel <i>P. arminjoniana</i>
Soft-plumaged Petrel	<i>Pterodroma mollis</i>	76	
White-headed Petrel	<i>Pterodroma lessonii</i>	77	
Great-winged Petrel	<i>Pterodroma macroptera</i>	75	
Providence Petrel	<i>Pterodroma solandri</i>	971	
Mottled Petrel	<i>Pterodroma inexpectata</i>	919	
Gould's Petrel	<i>Pterodroma leucoptera</i>	78	
Cook's Petrel <sup>V</sup>	<i>Pterodroma cookii</i>	918	
White-necked Petrel <sup>V,N</sup>	<i>Pterodroma cervicalis</i>	774	
Vanuatu Petrel <sup>V</sup>	<i>Pterodroma occulta</i>		treated as conspecific with White-necked Petrel <i>P. cervicalis</i>



Black-winged Petrel	<i>Pterodroma nigripennis</i>	955	
Atlantic Petrel <sup>V</sup>	<i>Pterodroma incerta</i>	773	supplementary list
Common Diving-Petrel	<i>Pelecanoides urinatrix</i>	85	
South Georgian Diving-Petrel <sup>V,MH</sup>	<i>Pelecanoides georgicus</i>	910	
<b>SPHENISCIFORMES</b>			
<b>Spheniscidae</b>			
King Penguin <sup>V,MH</sup>	<i>Aptenodytes patagonicus</i>	927	
Emperor Penguin <sup>HV</sup>	<i>Aptenodytes forsteri</i>	804	
Gentoo Penguin <sup>V,MH</sup>	<i>Pygoscelis papua</i>	926	
Adelie Penguin <sup>MV,HV</sup>	<i>Pygoscelis adeliae</i>	924	
Chinstrap Penguin <sup>V,HV</sup>	<i>Pygoscelis antarcticus</i>	925	<i>P. antarctic a</i>
Rockhopper Penguin <sup>V,MH</sup>	<i>Eudyptes chrysocome</i>	3	
Fiordland Penguin	<i>Eudyptes pachyrhynchus</i>	4	<i>Snares Penguin E.p. robustus</i> treated as separate species
Erect-crested Penguin <sup>V</sup>	<i>Eudyptes sclateri</i>	959	
Macaroni Penguin <sup>V,MH</sup>	<i>Eudyptes chrysolophus</i>	968	
Little Penguin	<i>Eudyptula minor</i>	5	
Magellanic Penguin <sup>V</sup>	<i>Spheniscus magellanicus</i>	858	
<b>PHALACROCORACIFORMES</b>			
new order; split from Pelecaniformes			
<b>Fregatidae</b>			
Lesser Frigatebird	<i>Fregata ariel</i>	95	
Great Frigatebird	<i>Fregata minor</i>	94	
Christmas Island Frigatebird <sup>V,C,CKV</sup>	<i>Fregata andrewsi</i>	909	<i>Christmas Frigatebird</i>
<b>Sulidae</b>			
Abbott's Booby <sup>V,C,AV</sup>	<i>Papasula abbotti</i>	854	
Cape Gannet <sup>V</sup>	<i>Morus capensis</i>	825	
Australasian Gannet	<i>Morus serrator</i>	104	
Masked Booby	<i>Sula dactylatra</i>	105	<i>Tasman Booby S.d. tasmani</i> treated as separate species
Red-footed Booby	<i>Sula sula</i>	103	
Brown Booby	<i>Sula leucogaster</i>	102	
<b>Anhingidae</b>			
Australasian Darter	<i>Anhinga novaehollandiae</i>	101	treated as conspecific with <i>Darter A. melanogaster</i>
<b>Phalacrocoracidae</b>			
Little Pied Cormorant	<i>Microcarbo melanoleucos</i>	100	<i>Phalacrocorax</i>
Great Cormorant	<i>Phalacrocorax carbo</i>	96	





Little Black Cormorant	<i>Phalacrocorax sulcirostris</i>	97	
Pied Cormorant	<i>Phalacrocorax varius</i>	99	
Black-faced Cormorant	<i>Phalacrocorax fuscescens</i>	98	
Imperial Shag <sup>MH</sup>	<i>Leucocarbo atriceps</i>	970	
Kerguelen Shag <sup>V</sup>	<i>Leucocarbo verrucosus</i>	803	supplementary list
<b>CICONIIFORMES</b>			
<b>Pelecanidae</b>			
Australian Pelican	<i>Pelecanus conspicillatus</i>	106	moved from Pelecaniformes
<b>Ciconiidae</b>			
Black-necked Stork	<i>Ephippiorhynchus asiaticus</i>	183	
<b>Ardeidae</b>			
Australasian Bittern	<i>Botaurus poiciloptilus</i>	197	
Australian Little Bittern	<i>Ixobrychus dubius</i>	195	treated as conspecific with <i>Little Bittern I. minutus</i>
Yellow Bittern <sup>V, CV</sup>	<i>Ixobrychus sinensis</i>	907	
Schrenk's Bittern <sup>CV</sup>	<i>Ixobrychus eurhythmus</i>	754	not on list
Cinnamon Bittern <sup>CV</sup>	<i>Ixobrychus cinnamomeus</i>	842	not on list
Black Bittern	<i>Ixobrychus flavicollis</i>	196	
Grey Heron <sup>V</sup>	<i>Ardea cinerea</i>	908	supplementary list
White-necked Heron	<i>Ardea pacifica</i>	189	
Eastern Great Egret	<i>Ardea modesta</i>	187	treated as conspecific with <i>Great Egret A. alba</i>
Intermediate Egret	<i>Ardea intermedia</i>	186	
Great-billed Heron	<i>Ardea sumatrana</i>	184	
Cattle Egret	<i>Ardea ibis</i>	977	
Striated Heron	<i>Butorides striata</i>	193	
Chinese Pond Heron <sup>CKV</sup>	<i>Ardeola bacchus</i>		not on list
Javan Pond Heron <sup>V</sup>	<i>Ardeola speciosa</i>		not on list
Pied Heron	<i>Egretta picata</i>	190	<i>Ardea</i>
White-faced Heron	<i>Egretta novaehollandiae</i>	188	
Little Egret	<i>Egretta garzetta</i>	185	
Eastern Reef Egret	<i>Egretta sacra</i>	191	
Black-crowned Night-Heron <sup>CKV</sup>	<i>Nycticorax nycticorax</i>	796	
Nankeen Night-Heron	<i>Nycticorax caledonicus</i>	192	
Malayan Night-Heron <sup>CV</sup>	<i>Gorsachius melanolophus</i>	797	
<b>Threskiornithidae</b>			



Glossy Ibis	<i>Plegadis falcinellus</i>	178	
Australian White Ibis	<i>Threskiornis molucca</i>	179	
Straw-necked Ibis	<i>Threskiornis spinicollis</i>	180	
Royal Spoonbill	<i>Platalea regia</i>	181	
Yellow-billed Spoonbill	<i>Platalea flavipes</i>	182	
<b>ACCIPITRIFORMES</b>			new order; split from Falconiformes
<b>Accipitridae</b>			
Eastern Osprey	<i>Pandion cristatus</i>	241	treated as conspecific with Osprey <i>P. haliaetus</i>
Black-shouldered Kite	<i>Elanus axillaris</i>	232	
Letter-winged Kite	<i>Elanus scriptus</i>	233	
Square-tailed Kite	<i>Lophoictinia isura</i>	230	
Black-breasted Buzzard	<i>Hamirostra melanosternon</i>	231	
Oriental Honey-buzzard <sup>V,CV</sup>	<i>Pernis ptilorhynchus</i>	792	not on list
Pacific Baza	<i>Aviceda subcristata</i>	234	
White-bellied Sea-Eagle	<i>Haliaeetus leucogaster</i>	226	
Whistling Kite	<i>Haliastur sphenurus</i>	228	
Brahminy Kite	<i>Haliastur indus</i>	227	
Black Kite	<i>Milvus migrans</i>	229	
Brown Goshawk	<i>Accipiter fasciatus</i>	221	
Collared Sparrowhawk	<i>Accipiter cirrocephalus</i>	222	
Variable Goshawk <sup>C</sup>	<i>Accipiter hiogaster</i>		treated as conspecific with Brown Goshawk <i>A. fasciatus</i>
Grey Goshawk	<i>Accipiter novaehollandiae</i>	220	
Spotted Harrier	<i>Circus assimilis</i>	218	
Swamp Harrier	<i>Circus approximans</i>	219	
Red Goshawk	<i>Erythrotriorchis radiatus</i>	223	
Gurney's Eagle <sup>TS/V</sup>	<i>Aquila gurneyi</i>	801	
Wedge-tailed Eagle	<i>Aquila audax</i>	224	
Little Eagle	<i>Hieraaetus morphnoides</i>	225	
<b>FALCONIFORMES</b>			
<b>Falconidae</b>			
Nankeen Kestrel	<i>Falco cenchroides</i>	240	
Brown Falcon	<i>Falco berigora</i>	239	
Australian Hobby	<i>Falco longipennis</i>	235	
Grey Falcon	<i>Falco hypoleucos</i>	236	



Black Falcon	<i>Falco subniger</i>	238	
Peregrine Falcon	<i>Falco peregrinus</i>	237	
<b>GRUIFORMES</b>			
<b>Gruidae</b>			
Sarus Crane	<i>Grus antigone</i>	898	
Brolga	<i>Grus rubicunda</i>	177	
<b>Rallidae</b>			
Purple Swamphen	<i>Porphyrio porphyrio</i>	58	
White Gallinule <sup>LH,E</sup>	<i>Porphyrio albus</i>	746	
Chestnut Rail	<i>Eulabeornis castaneiventris</i>	47	
Red-necked Crake	<i>Rallina tricolor</i>	48	
Red-legged Crake <sup>V</sup>	<i>Rallina fasciata</i>	900	
Lewin's Rail	<i>Levinia pectoralis</i>	45	<i>Rallus</i>
Buff-banded Rail	<i>Gallirallus philippensis</i>	46	
Lord Howe Woodhen <sup>LH</sup>	<i>Gallirallus sylvestris</i>	966	
Corncrake <sup>V</sup>	<i>Crex crex</i>	899	supplementary list
Baillon's Crake	<i>Porzana pusilla</i>	50	
Australian Spotted Crake	<i>Porzana fluminea</i>	49	
Ruddy-breasted Crake <sup>CV</sup>	<i>Porzana fusca</i>	715	
Spotless Crake	<i>Porzana tabuensis</i>	51	
White-browed Crake	<i>Amauromis cinerea</i>	52	<i>Porzana</i>
Pale-vented Bush-hen	<i>Amauromis moluccana</i>	53	treated as conspecific with Bush-hen <i>A. olivaceus</i>
White-breasted Waterhen <sup>V,C,CK</sup>	<i>Amauromis phoenicurus</i>	768	
Watercock <sup>CV,(CK,V)</sup>	<i>Gallixrex cinerea</i>	711	
Black-tailed Native-hen	<i>Tribonyx ventralis</i>	55	<i>Gallinula</i>
Tasmanian Native-hen	<i>Tribonyx mortierii</i>	54	<i>Gallinula</i>
Dusky Moorhen	<i>Gallinula tenebrosa</i>	56	
Eurasian Coot	<i>Fulica atra</i>	59	
<b>Otididae</b>			
Australian Bustard	<i>Ardeotis australis</i>	176	
<b>CHARADRIIFORMES</b>			
<b>Chionidae</b>			
Black-faced Sheathbill <sup>H</sup>	<i>Chionis minor</i>	767	
<b>Burhinidae</b>			



Bush Stone-curlew	<i>Burhinus grallarius</i>	174	
Beach Stone-curlew	<i>Esacus magnirostris</i>	175	<i>E. neglectus</i>
<b>Haematopodidae</b>			
South Island Pied Oystercatcher <sup>V</sup>	<i>Haematopus finschi</i>	744	not on list
Australian Pied Oystercatcher	<i>Haematopus longirostris</i>	130	Pied Oystercatcher
Sooty Oystercatcher	<i>Haematopus fuliginosus</i>	131	
<b>Recurvirostridae</b>			
Black-winged Stilt	<i>Himantopus himantopus</i>	146	
Red-necked Avocet	<i>Recurvirostra novaehollandiae</i>	148	
Banded Stilt	<i>Cladorhynchus leucocephalus</i>	147	
<b>Charadriidae</b>			
Pacific Golden Plover	<i>Pluvialis fulva</i>	137	
American Golden Plover <sup>V</sup>	<i>Pluvialis dominicus</i>		supplementary list
Grey Plover	<i>Pluvialis squatarola</i>	136	
Ringed Plover <sup>V</sup>	<i>Charadrius hiaticula</i>	895	
Little Ringed Plover <sup>V</sup>	<i>Charadrius dubius</i>	851	
Kentish Plover <sup>V</sup>	<i>Charadrius alexandrinus</i>	770	
Red-capped Plover	<i>Charadrius ruficapillus</i>	143	
Double-banded Plover	<i>Charadrius bicinctus</i>	140	
Lesser Sand Plover	<i>Charadrius mongolus</i>	139	
Greater Sand Plover	<i>Charadrius leschenaultii</i>	141	
Caspian Plover <sup>V,CRV</sup>	<i>Charadrius asiaticus</i>	894	
Oriental Plover	<i>Charadrius veredus</i>	142	
Inland Dotterel	<i>Charadrius australis</i>	145	
Black-fronted Dotterel	<i>Elsyornis melanops</i>	144	
Hooded Plover	<i>Thinornis rubricollis</i>	138	
Red-kneed Dotterel	<i>Erythrogonys cinctus</i>	132	
Banded Lapwing	<i>Vanellus tricolor</i>	135	
Masked Lapwing	<i>Vanellus miles</i>	133	
Grey-headed Lapwing <sup>V</sup>	<i>Vanellus cinereus</i>		not on list
<b>Pedionomidae</b>			
Plains-wanderer	<i>Pedionomus torquatus</i>	20	
<b>Jacaniidae</b>			
Comb-crested Jacana	<i>Irediparra gallinacea</i>	171	



Pheasant-tailed Jacana <sup>V</sup>	<i>Hydrophasianus chirurgus</i>	897	not on list
<b>Rostratulidae</b>			
Australian Painted Snipe	<i>Rostratula australis</i>	170	treated as conspecific with Painted Snipe <i>R. benghalensis</i>
<b>Scolopacidae</b>			
Latham's Snipe	<i>Gallinago hardwickii</i>	168	
Pin-tailed Snipe <sup>V,C</sup>	<i>Gallinago stenura</i>	852	
Swinhoe's Snipe	<i>Gallinago megala</i>	169	
Black-tailed Godwit	<i>Limosa limosa</i>	152	
Hudsonian Godwit <sup>V</sup>	<i>Limosa haemastica</i>	815	
Bar-tailed Godwit	<i>Limosa lapponica</i>	153	
Little Curlew	<i>Numenius minutus</i>	151	
Whimbrel	<i>Numenius phaeopus</i>	150	
Eastern Curlew	<i>Numenius madagascariensis</i>	149	
Upland Sandpiper <sup>V</sup>	<i>Bartramia longicauda</i>	892	
Terek Sandpiper	<i>Xenus cinereus</i>	160	
Common Sandpiper	<i>Actitis hypoleucos</i>	157	
Green Sandpiper <sup>V</sup>	<i>Tringa ochropus</i>	832	supplementary list
Grey-tailed Tattler	<i>Tringa brevipes</i>	155	<i>Heteroscelus</i>
Wandering Tattler	<i>Tringa incana</i>	156	<i>Heteroscelus</i>
Spotted Redshank <sup>V</sup>	<i>Tringa erythropus</i>	820	
Nordmann's Greenshank <sup>V</sup>	<i>Tringa guttifer</i>		supplementary list
Common Greenshank	<i>Tringa nebularia</i>	158	
Lesser Yellowlegs <sup>V</sup>	<i>Tringa flavipes</i>	809	
Marsh Sandpiper	<i>Tringa stagnatilis</i>	159	
Common Redshank	<i>Tringa totanus</i>	891	
Wood Sandpiper	<i>Tringa glareola</i>	154	
Ruddy Turnstone	<i>Arenaria interpres</i>	129	
Asian Dowitcher	<i>Limnodromus semipalmatus</i>	939	
Short-billed Dowitcher <sup>V</sup>	<i>Limnodromus griseus</i>	764	not on list
Great Knot	<i>Calidris tenuirostris</i>	165	
Red Knot	<i>Calidris canutus</i>	164	
Sanderling	<i>Calidris alba</i>	166	
Little Stint	<i>Calidris minuta</i>	857	
Red-necked Stint	<i>Calidris ruficollis</i>	162	



Long-toed Stint	<i>Calidris subminuta</i>	965	
White-rumped Sandpiper	<i>Calidris fuscicollis</i>	849	
Baird's Sandpiper	<i>Calidris bairdii</i>	890	
Pectoral Sandpiper	<i>Calidris melanotos</i>	978	
Sharp-tailed Sandpiper	<i>Calidris acuminata</i>	163	
Dunlin	<i>Calidris alpina</i>	888	
Curllew Sandpiper	<i>Calidris ferruginea</i>	161	
Stilt Sandpiper	<i>Calidris himantopus</i>	827	<i>Micropalama</i>
Buff-breasted Sandpiper	<i>Tryngites subruficollis</i>	887	
Broad-billed Sandpiper	<i>Limicola falcinellus</i>	167	
Ruff	<i>Philomachus pugnax</i>	934	
Wilson's Phalarope	<i>Steganopus tricolor</i>	886	
Red-necked Phalarope	<i>Phalaropus lobatus</i>	932	
Grey Phalarope	<i>Phalaropus fulicarius</i>	835	<i>P. fulicari a</i>
<b>Turnicidae</b>			formerly included in Turniciformes
Red-backed Button-quail	<i>Turnix maculosus</i>	13	<i>T. maculos a</i>
Black-breasted Button-quail	<i>Turnix melanogaster</i>	17	
Chestnut-backed Button-quail	<i>Turnix castanotus</i>	15	<i>T. castanot a</i>
Buff-breasted Button-quail	<i>Turnix olivii</i>	16	
Painted Button-quail	<i>Turnix varius</i>	14	<i>T. vari a</i>
Red-chested Button-quail	<i>Turnix pyrrhothorax</i>	19	
Little Button-quail	<i>Turnix velox</i>	18	
<b>Glareolidae</b>			
Oriental Pratincole	<i>Glareola maldivarum</i>	172	
Australian Pratincole	<i>Stiltia isabella</i>	173	
<b>Stercorariidae</b>			new family; split from Laridae
South Polar Skua	<i>Stercorarius maccormicki</i>	979	<i>Catharacta</i>
Brown Skua	<i>Stercorarius antarcticus</i>	980	treated as conspecific with Great Skua <i>Catharacta skua</i>
Pomarine Jaeger	<i>Stercorarius pomarinus</i>	945	
Arctic Jaeger	<i>Stercorarius parasiticus</i>	128	
Long-tailed Jaeger	<i>Stercorarius longicaudus</i>	933	
<b>Laridae</b>			
Common Noddy	<i>Anous stolidus</i>	122	
Black Noddy	<i>Anous minutus</i>	124	



Lesser Noddy	<i>Anous tenuirostris</i>	123	
White Tern <sup>V,LCR,N</sup>	<i>Gygis alba</i>	972	
Grey Ternlet <sup>V,LAN</sup>	<i>Procelsterna cerulea</i>	982	
Bridled Tern	<i>Onychoprion anaethetus</i>	121	<i>Sterna</i>
Sooty Tern	<i>Onychoprion fuscata</i>	120	<i>Sterna</i>
Little Tern	<i>Sternula albifrons</i>	117	<i>Sterna</i>
Fairy Tern	<i>Sternula nereis</i>	118	<i>Sterna</i>
Gull-billed Tern	<i>Gelochelidon nilotica</i>	111	<i>Sterna</i>
Caspian Tern	<i>Hydroprogne caspia</i>	112	<i>Sterna</i>
Whiskered Tern	<i>Chlidonias hybrida</i>	110	
White-winged Black Tern	<i>Chlidonias leucopterus</i>	109	
Black Tern <sup>V</sup>	<i>Chlidonias niger</i>	884	
Roseate Tern	<i>Sterna dougallii</i>	113	
White-fronted Tern	<i>Sterna striata</i>	114	
Black-naped Tern	<i>Sterna sumatrana</i>	119	
Common Tern	<i>Sterna hirundo</i>	953	
Arctic Tern	<i>Sterna paradisaea</i>	952	
Antarctic Tern <sup>V,MH</sup>	<i>Sterna vittata</i>	985	
Lesser Crested Tern	<i>Thalasseus bengalensis</i>	116	<i>Sterna</i>
Crested Tern	<i>Thalasseus bergii</i>	115	<i>Sterna</i>
Pacific Gull	<i>Larus pacificus</i>	126	
Lesser Black-backed Gull <sup>CKV</sup>	<i>Larus fuscus</i>	855	supplementary list
Kelp Gull	<i>Larus dominicanus</i>	981	
Mew Gull <sup>CV</sup>	<i>Larus canus</i>	786	not on list
Black-tailed Gull <sup>V</sup>	<i>Larus crassirostris</i>	856	
Laughing Gull <sup>V</sup>	<i>Leucophaeus atricilla</i>	785	<i>Larus</i>
Franklin's Gull <sup>V</sup>	<i>Leucophaeus pipixcan</i>	885	<i>Larus</i>
Silver Gull	<i>Chroicocephalus novaehollandiae</i>	125	<i>Larus</i>
Black-headed Gull <sup>CV</sup>	<i>Chroicocephalus ridibundus</i>	784	<i>Larus</i>
Sabine's Gull <sup>V</sup>	<i>Xema sabini</i>	783	<i>Larus</i>
<b>PSITTACIFORMES</b>			
<b>Nestoridae</b>			new family; split from Psittacidae
Norfolk Island Kaka <sup>NE</sup>	<i>Nestor productus</i>	742	
<b>Cacatuidae</b>			



Palm Cockatoo	<i>Probosciger aterrimus</i>	263	
Red-tailed Black-Cockatoo	<i>Calyptorhynchus banksii</i>	264	
Glossy Black-Cockatoo	<i>Calyptorhynchus lathami</i>	265	
Yellow-tailed Black-Cockatoo	<i>Calyptorhynchus funereus</i>	267	
Carnaby's Black-Cockatoo	<i>Calyptorhynchus latirostris</i>	794	Short-billed Black-Cockatoo
Baudin's Black-Cockatoo	<i>Calyptorhynchus baudinii</i>	266	Long-billed Black-Cockatoo
Gang-gang Cockatoo	<i>Callocephalon fimbriatum</i>	268	
Major Mitchell's Cockatoo	<i>Lophochroa leadbeateri</i>	270	<i>Cacatua</i>
Galah	<i>Eolophus roseicapillus</i>	273	<i>Cacatua roseicapilla</i>
Long-billed Corella	<i>Cacatua tenuirostris</i>	272	
Western Corella	<i>Cacatua pastinator</i>	795	
Little Corella	<i>Cacatua sanguinea</i>	271	
Sulphur-crested Cockatoo	<i>Cacatua galerita</i>	269	
Cockatiel	<i>Nymphicus hollandicus</i>	274	
<b>Psittacidae</b>			
Rainbow Lorikeet	<i>Trichoglossus haematodus</i>	254	
Scaly-breasted Lorikeet	<i>Trichoglossus chlorolepidotus</i>	256	
Varied Lorikeet	<i>Psitteuteles versicolor</i>	257	
Musk Lorikeet	<i>Glossopsitta concinna</i>	258	
Little Lorikeet	<i>Glossopsitta pusilla</i>	260	
Purple-crowned Lorikeet	<i>Glossopsitta porphyrocephala</i>	259	
Double-eyed Fig-Parrot	<i>Cyclopsitta diophthalma</i>	261	
Eclectus Parrot	<i>Eclectus roratus</i>	275	
Red-cheeked Parrot	<i>Geoffroyus geoffroyi</i>	276	
Australian King-Parrot	<i>Alisterus scapularis</i>	281	
Red-winged Parrot	<i>Aprosmictus erythropterus</i>	280	
Superb Parrot	<i>Polytelis swainsonii</i>	277	
Regent Parrot	<i>Polytelis anthopeplus</i>	278	
Princess Parrot	<i>Polytelis alexandrae</i>	279	
Green Rosella	<i>Platycercus caledonicus</i>	285	
Crimson Rosella	<i>Platycercus elegans</i>	282	
Eastern Rosella	<i>Platycercus eximius</i>	288	
Pale-headed Rosella	<i>Platycercus adscitus</i>	286	
Northern Rosella	<i>Platycercus venustus</i>	287	





Western Rosella	<i>Platycercus icterotis</i>	289	
Australian Ringneck	<i>Barnardius zonarius</i>	294	
Red-capped Parrot	<i>Purpureicephalus spurius</i>	290	
Blue Bonnet	<i>Northiella haematogaster</i>	297	
Swift Parrot	<i>Lathamus discolor</i>	309	
Red-rumped Parrot	<i>Psephotus haematonotus</i>	295	
Mulga Parrot	<i>Psephotus varius</i>	296	
Golden-shouldered Parrot	<i>Psephotus chrysopterygius</i>	300	
Hooded Parrot	<i>Psephotus dissimilis</i>	301	
Paradise Parrot <sup>F</sup>	<i>Psephotus pulcherrimus</i>	299	
Tasman Parakeet <sup>CHEN</sup>	<i>Cyanoramphus cookii</i>		treated as conspecific with Red-crowned Parakeet <i>C. novaezelandiae</i>
Red-fronted Parakeet <sup>WE</sup>	<i>Cyanoramphus novaezelandiae</i>	808	Red-crowned Parakeet
Budgerigar	<i>Melopsittacus undulatus</i>	310	
Bourke's Parrot	<i>Neopsephotus bourkii</i>	304	
Blue-winged Parrot	<i>Neophema chrysostoma</i>	306	
Elegant Parrot	<i>Neophema elegans</i>	307	
Rock Parrot	<i>Neophema petrophila</i>	308	
Orange-bellied Parrot	<i>Neophema chrysogaster</i>	305	
Turquoise Parrot	<i>Neophema pulchella</i>	302	
Scarlet-chested Parrot	<i>Neophema splendida</i>	303	
Ground Parrot	<i>Pezoporus wallicus</i>	311	
Night Parrot	<i>Pezoporus occidentalis</i>	312	
<b>CUCULIFORMES</b>			
<b>Cuculidae</b>			
Lesser Coucal <sup>AV</sup>	<i>Centropus bengalensis</i>		not on list
Pheasant Coucal	<i>Centropus phasianinus</i>	349	added to family (formerly included in Centropodidae)
Asian Koel <sup>CV</sup>	<i>Eudynamys scolopacea</i>		treated as conspecific with Common Koel <i>E. scolopacea</i>
Eastern Koel	<i>Eudynamys orientalis</i>	347	treated as conspecific with Common Koel <i>E. scolopacea</i>
Long-tailed Cuckoo <sup>LHN</sup>	<i>Urodynamys taitensis</i>	791	<i>Eudynamis</i>
Channel-billed Cuckoo	<i>Scythrops novaehollandiae</i>	348	
Horsfield's Bronze-Cuckoo	<i>Chalcites basalís</i>	342	<i>Chrysococcyx</i>
Black-eared Cuckoo	<i>Chalcites osculans</i>	341	<i>Chrysococcyx</i>
Shining Bronze-Cuckoo	<i>Chalcites lucidus</i>	344	<i>Chrysococcyx</i>
Little Bronze-Cuckoo	<i>Chalcites minutillus</i>	345	Gould's Bronze-Cuckoo <i>Chrysococcyx minutillus russatus</i> treated as separate species



Pallid Cuckoo	<i>Cacomantis pallidus</i>	337	<i>Cuculus</i>
Chestnut-breasted Cuckoo	<i>Cacomantis castaneiventris</i>	340	
Fan-tailed Cuckoo	<i>Cacomantis flabelliformis</i>	338	
Brush Cuckoo	<i>Cacomantis variolosus</i>	339	
Oriental Cuckoo	<i>Cuculus optatus</i>	336	treated as conspecific with Oriental Cuckoo <i>C. stauratus</i>
Large Hawk-Cuckoo <sup>CV</sup>	<i>Hierococcyx sparverioides</i>		not on list
<b>STRIGIFORMES</b>			
<b>Strigidae</b>			
Powerful Owl	<i>Ninox strenua</i>	248	
Rufous Owl	<i>Ninox rufa</i>	247	
Barking Owl	<i>Ninox connivens</i>	246	
Southern Boobook	<i>Ninox novaeseelandiae</i>	242	
Brown Hawk-Owl <sup>AV</sup>	<i>Ninox scutulata</i>	823	
Christmas Island Hawk-Owl <sup>C</sup>	<i>Ninox natalis</i>	807	treated as conspecific with Moluccan Hawk-Owl <i>N. squamipila</i>
Buffy Fish-Owl <sup>CK</sup>	<i>Bubo ketupu</i>	747	supplementary list
<b>Tytonidae</b>			
Sooty Owl	<i>Tyto tenebricosa</i>	253	Lesser Sooty Owl <i>T.t. multipunctata</i> treated as separate species
Masked Owl	<i>Tyto novaehollandiae</i>	250	
Eastern Barn Owl	<i>Tyto javanica</i>	249	treated as conspecific with Barn Owl <i>T. alba</i>
Eastern Grass Owl	<i>Tyto longimembris</i>	252	treated as conspecific with Grass Owl <i>T. capensis</i>
<b>CORACIIFORMES</b>			
<b>Alcedinidae</b>			
Common Kingfisher <sup>CV</sup>	<i>Alcedo atthis</i>	753	not on list
Azure Kingfisher	<i>Ceyx azureus</i>	319	<i>Alcedo azure a</i>
Little Kingfisher	<i>Ceyx pusilla</i>	320	<i>Alcedo</i>
<b>Halcyonidae</b>			
Buff-breasted Paradise-Kingfisher	<i>Tanysiptera sylvia</i>	328	
Laughing Kookaburra	<i>Dacelo novaeguineae</i>	322	
Blue-winged Kookaburra	<i>Dacelo leachii</i>	323	
Yellow-billed Kingfisher	<i>Syma torotoro</i>	321	
Forest Kingfisher	<i>Todiramphus macleayii</i>	324	
Red-backed Kingfisher	<i>Todiramphus pyrrhopygius</i>	325	<i>T. pyrrhopygi a</i>
Sacred Kingfisher	<i>Todiramphus sanctus</i>	326	
Collared Kingfisher	<i>Todiramphus chloris</i>	327	



Black-capped Kingfisher <sup>V</sup>	<i>Halcyon pileata</i>		not on list
<b>Meropidae</b>			
Rainbow Bee-eater	<i>Merops ornatus</i>	329	
<b>Coraciidae</b>			
Dollarbird	<i>Eurystomus orientalis</i>	318	
<b>PASSERIFORMES</b>			
<b>Pittidae</b>			
Red-bellied Pitta	<i>Pitta erythrogaster</i>	353	
Blue-winged Pitta <sup>V,CV</sup>	<i>Pitta moluccensis</i>	880	
Noisy Pitta	<i>Pitta versicolor</i>	352	
Rainbow Pitta	<i>Pitta iris</i>	354	
<b>Menuridae</b>			
Albert's Lyrebird	<i>Menura alberti</i>	351	
Superb Lyrebird	<i>Menura novaehollandiae</i>	350	
<b>Atrichornithidae</b>			
Rufous Scrub-bird	<i>Atrichornis rufescens</i>	355	
Noisy Scrub-bird	<i>Atrichornis clamosus</i>	356	
<b>Climacteridae</b>			
White-throated Treecreeper	<i>Cormobates leucophaea</i>	558	<i>C. leucophaea</i> <i>us</i>
White-browed Treecreeper	<i>Climacteris affinis</i>	561	
Red-browed Treecreeper	<i>Climacteris erythroptis</i>	560	
Brown Treecreeper	<i>Climacteris picumnus</i>	555	
Black-tailed Treecreeper	<i>Climacteris melanura</i>	562	
Rufous Treecreeper	<i>Climacteris rufa</i>	556	
<b>Ptilonorhynchidae</b>			
Spotted Catbird	<i>Ailuroedus melanotis</i>	677	
Green Catbird	<i>Ailuroedus crassirostris</i>	676	
Tooth-billed Bowerbird	<i>Scenopoeetes dentirostris</i>	678	
Golden Bowerbird	<i>Amblyornis newtonianus</i>	685	<i>Pronodura newtoniana</i>
Regent Bowerbird	<i>Sericulus chrysocephalus</i>	684	
Satin Bowerbird	<i>Ptilonorhynchus violaceus</i>	679	
Spotted Bowerbird	<i>Ptilonorhynchus maculatus</i>	680	<i>Chlamydera maculata</i>
Western Bowerbird	<i>Ptilonorhynchus guttatus</i>	681	<i>Chlamydera guttata</i>
Great Bowerbird	<i>Ptilonorhynchus nuchalis</i>	683	<i>Chlamydera</i>



Fawn-breasted Bowerbird	<i>Ptilonorhynchus cerviniventris</i>	682	
<b>Maluridae</b>			
Superb Fairy-wren	<i>Malurus cyaneus</i>	529	
Splendid Fairy-wren	<i>Malurus splendens</i>	532	
Purple-crowned Fairy-wren	<i>Malurus coronatus</i>	542	
Red-backed Fairy-wren	<i>Malurus melanocephalus</i>	541	
White-winged Fairy-wren	<i>Malurus leucopterus</i>	535	
Variiegated Fairy-wren	<i>Malurus lamberti</i>	536	
Lovely Fairy-wren	<i>Malurus amabilis</i>	539	
Blue-breasted Fairy-wren	<i>Malurus pulcherrimus</i>	540	
Red-winged Fairy-wren	<i>Malurus elegans</i>	538	
Southern Emu-wren	<i>Stipiturus malachurus</i>	526	
Mallee Emu-wren	<i>Stipiturus mallee</i>	527	
Rufous-crowned Emu-wren	<i>Stipiturus ruficeps</i>	528	
Grey Grasswren	<i>Amytornis barbatus</i>	871	
Striated Grasswren	<i>Amytornis striatus</i>	513	
Short-tailed Grasswren	<i>Amytornis merrotsyi</i>	735	treated as conspecific with Striated Grasswren <i>A. striatus</i>
White-throated Grasswren	<i>Amytornis woodwardi</i>	516	
Carpentarian Grasswren	<i>Amytornis dorotheae</i>	517	
Thick-billed Grasswren	<i>Amytornis textilis</i>	512	
Dusky Grasswren	<i>Amytornis pumelli</i>	511	
Kalkadoon Grasswren	<i>Amytornis ballarae</i>	708	treated as conspecific with Dusky Grasswren <i>A. pumelli</i>
Eyrean Grasswren	<i>Amytornis goyderi</i>	515	
Black Grasswren	<i>Amytornis housei</i>	518	
<b>Dasyornithidae</b>			new family; split from Pardalotidae
Eastern Bristlebird	<i>Dasyornis brachypterus</i>	519	
Western Bristlebird	<i>Dasyornis longirostris</i>	520	
Rufous Bristlebird	<i>Dasyornis broadbenti</i>	521	
<b>Acanthizidae</b>			new family; split from Pardalotidae
Pilotbird	<i>Pycnoptilus floccosus</i>	506	
Rockwarbler	<i>Origma solitaria</i>	505	
Fernwren	<i>Oreoscopus gutturalis</i>	496	
Yellow-throated Scrubwren	<i>Sericornis citreogularis</i>	493	
White-browed Scrubwren	<i>Sericornis frontalis</i>	488	



Tasmanian Scrubwren	<i>Sericornis humilis</i>	495	
Atherton Scrubwren	<i>Sericornis kerri</i>	946	
Large-billed Scrubwren	<i>Sericornis magnirostra</i>	494	<i>S. magnirostris</i>
Tropical Scrubwren	<i>Sericornis beccarii</i>		
Scrubtit	<i>Acanthornis magna</i>	487	<i>A. magnus</i>
Chestnut-rumped Heathwren	<i>Hylacola pyrrhopygia</i>	498	
Shy Heathwren	<i>Hylacola cauta</i>	499	
Striated Fieldwren	<i>Calamanthus fuliginosus</i>	500	
Rufous Fieldwren	<i>Calamanthus campestris</i>	502	
Redthroat	<i>Pyrrholaemus brunneus</i>	497	
Speckled Warbler	<i>Chthonicola sagittata</i>	504	
Weebill	<i>Smicromis brevirostris</i>	465	
Brown Gerygone	<i>Gerygone mouki</i>	454	
Norfolk Island Gerygone <sup>N</sup>	<i>Gerygone modesta</i>	958	
Lord Howe Gerygone <sup>L<sup>H</sup>E</sup>	<i>Gerygone insularis</i>	8215	
Mangrove Gerygone	<i>Gerygone levigaster</i>	460	
Western Gerygone	<i>Gerygone fusca</i>	463	
Dusky Gerygone	<i>Gerygone tenebrosa</i>	461	
Large-billed Gerygone	<i>Gerygone magnirostris</i>	457	
Green-backed Gerygone	<i>Gerygone chloronota</i>	458	<i>G. chloronotus</i>
Fairy Gerygone	<i>Gerygone palpebrosa</i>	456	
White-throated Gerygone	<i>Gerygone albogularis</i>	453	<i>G. olivacea</i>
Slaty-backed Thornbill	<i>Acanthiza robustirostris</i>	480	
Striated Thornbill	<i>Acanthiza lineata</i>	470	
Yellow Thornbill	<i>Acanthiza nana</i>	471	
Yellow-rumped Thornbill	<i>Acanthiza chrysorrhoa</i>	486	
Chestnut-rumped Thornbill	<i>Acanthiza uropygialis</i>	481	
Buff-rumped Thornbill	<i>Acanthiza reguloides</i>	484	
Western Thornbill	<i>Acanthiza inornata</i>	472	
Slender-billed Thornbill	<i>Acanthiza iredalei</i>	482	
Tasmanian Thornbill	<i>Acanthiza ewingii</i>	473	
Inland Thornbill	<i>Acanthiza apicalis</i>	476	
Brown Thornbill	<i>Acanthiza pusilla</i>	475	
Mountain Thornbill	<i>Acanthiza katherina</i>	474	



Southern Whiteface	<i>Aphelocephala leucopsis</i>	466	
Chestnut-breasted Whiteface	<i>Aphelocephala pectoralis</i>	468	
Banded Whiteface	<i>Aphelocephala nigricincta</i>	469	
<b>Pardalotidae</b>			
Spotted Pardalote	<i>Pardalotus punctatus</i>	565	
Forty-spotted Pardalote	<i>Pardalotus quadragintus</i>	571	
Red-browed Pardalote	<i>Pardalotus rubricatus</i>	570	
Striated Pardalote	<i>Pardalotus striatus</i>	976	
<b>Meliphagidae</b>			
Eastern Spinebill	<i>Acanthorhynchus tenuirostris</i>	591	
Western Spinebill	<i>Acanthorhynchus superciliosus</i>	592	
Pied Honeyeater	<i>Certhionyx variegatus</i>	602	
Lewin's Honeyeater	<i>Meliphaga lewinii</i>	605	
Yellow-spotted Honeyeater	<i>Meliphaga notata</i>	606	
Graceful Honeyeater	<i>Meliphaga gracilis</i>	612	
White-lined Honeyeater	<i>Meliphaga albilineata</i>	607	
Kimberley Honeyeater	<i>Meliphaga fordiana</i>	8293	treated as conspecific with White-lined Honeyeater <i>M. albilineata</i>
Bridled Honeyeater	<i>Lichenostomus frenatus</i>	611	
Eungella Honeyeater	<i>Lichenostomus hindwoodi</i>	834	
Yellow-faced Honeyeater	<i>Lichenostomus chrysops</i>	614	
Singing Honeyeater	<i>Lichenostomus virescens</i>	608	
Varied Honeyeater	<i>Lichenostomus versicolor</i>	609	
Mangrove Honeyeater	<i>Lichenostomus fasciocularis</i>	610	
White-gaped Honeyeater	<i>Lichenostomus unicolor</i>	628	
Yellow Honeyeater	<i>Lichenostomus flavus</i>	626	
White-eared Honeyeater	<i>Lichenostomus leucotis</i>	617	
Yellow-throated Honeyeater	<i>Lichenostomus flavicollis</i>	616	
Yellow-tufted Honeyeater	<i>Lichenostomus melanops</i>	619	
Purple-gaped Honeyeater	<i>Lichenostomus cratitius</i>	620	
Grey-headed Honeyeater	<i>Lichenostomus keartlandi</i>	621	
Yellow-plumed Honeyeater	<i>Lichenostomus ornatus</i>	622	
Grey-fronted Honeyeater	<i>Lichenostomus plumulus</i>	623	
Fuscous Honeyeater	<i>Lichenostomus fuscus</i>	613	
Yellow-tinted Honeyeater	<i>Lichenostomus flavescens</i>	624	



White-plumed Honeyeater	<i>Lichenostomus penicillatus</i>	625	
White-fronted Honeyeater	<i>Pumella albigrons</i>	594	<i>Phylidonyris</i>
Bell Miner	<i>Manorina melanophrys</i>	633	
Noisy Miner	<i>Manorina melanocephala</i>	634	
Black-eared Miner	<i>Manorina melanotis</i>	967	
Yellow-throated Miner	<i>Manorina flavigula</i>	635	
Spiny-cheeked Honeyeater	<i>Acanthagenys rufogularis</i>	640	
Western Wattlebird	<i>Anthochaera lunulata</i>	710	treated as conspecific with Little Wattlebird A. <i>chrysoptera</i>
Little Wattlebird	<i>Anthochaera chrysoptera</i>	712	
Regent Honeyeater	<i>Anthochaera phrygia</i>	603	<i>Xanthomyza</i>
Red Wattlebird	<i>Anthochaera carunculata</i>	638	
Yellow Wattlebird	<i>Anthochaera paradoxa</i>	639	
Brown-backed Honeyeater	<i>Ramsayornis modestus</i>	595	
Bar-breasted Honeyeater	<i>Ramsayornis fasciatus</i>	596	
Rufous-banded Honeyeater	<i>Conopophila albogularis</i>	600	
Rufous-throated Honeyeater	<i>Conopophila rufogularis</i>	601	
Grey Honeyeater	<i>Conopophila whitei</i>	599	
Crimson Chat	<i>Epthianura tricolor</i>	449	
Orange Chat	<i>Epthianura aurifrons</i>	450	
Yellow Chat	<i>Epthianura crocea</i>	451	
White-fronted Chat	<i>Epthianura albifrons</i>	448	
Gibberbird	<i>Ashbyia lovensis</i>	452	
Black Honeyeater	<i>Sugomel niger</i>	589	<i>Certhionyx</i>
Dusky Honeyeater	<i>Myzomela obscura</i>	590	
Red-headed Honeyeater	<i>Myzomela erythrocephala</i>	587	
Scarlet Honeyeater	<i>Myzomela sanguinolenta</i>	586	
Green-backed Honeyeater	<i>Glycichaera fallax</i>	604	
Tawny-crowned Honeyeater	<i>Glyciphila melanops</i>	593	<i>Phylidonyris</i>
Banded Honeyeater	<i>Cissomela pectoralis</i>	588	<i>Certhionyx</i>
Brown Honeyeater	<i>Lichmera indistincta</i>	597	
Crescent Honeyeater	<i>Phylidonyris pyrrhopterus</i>	630	<i>P. pyrrhoptera</i>
New Holland Honeyeater	<i>Phylidonyris novaehollandiae</i>	631	
White-cheeked Honeyeater	<i>Phylidonyris niger</i>	632	<i>P. nigra</i>
White-streaked Honeyeater	<i>Trichodere cockerelli</i>	627	



Black-chinned Honeyeater	<i>Melithreptus gularis</i>	580	
Strong-billed Honeyeater	<i>Melithreptus validirostris</i>	582	
Brown-headed Honeyeater	<i>Melithreptus brevirostris</i>	583	
White-throated Honeyeater	<i>Melithreptus albogularis</i>	579	
White-naped Honeyeater	<i>Melithreptus lunatus</i>	578	
Black-headed Honeyeater	<i>Melithreptus affinis</i>	584	
Blue-faced Honeyeater	<i>Entomyzon cyanotis</i>	641	
Helmeted Friarbird	<i>Philemon buceroides</i>	642	
Silver-crowned Friarbird	<i>Philemon argenteiceps</i>	644	
Noisy Friarbird	<i>Philemon comiculatus</i>	645	
Little Friarbird	<i>Philemon citreogularis</i>	646	
Macleay's Honeyeater	<i>Xanthotis macleayanus</i>	615	<i>X. macleayana</i>
Tawny-breasted Honeyeater	<i>Xanthotis flaviventer</i>	629	
Striped Honeyeater	<i>Plectorhyncha lanceolata</i>	585	
Painted Honeyeater	<i>Grantiella picta</i>	598	
<b>Pomatostomidae</b>			
Grey-crowned Babbler	<i>Pomatostomus temporalis</i>	443	
Hall's Babbler	<i>Pomatostomus halli</i>	938	
White-browed Babbler	<i>Pomatostomus superciliosus</i>	445	
Chestnut-crowned Babbler	<i>Pomatostomus ruficeps</i>	446	
<b>Orthonychidae</b>			
Australian Logrunner	<i>Orthonyx temminckii</i>	434	Logrunner
Chowchilla	<i>Orthonyx spaldingii</i>	435	
<b>Eupetidae</b>			
different family; formerly Cinclosomatidae			
Spotted Quail-thrush	<i>Cinclosoma punctatum</i>	436	
Chestnut Quail-thrush	<i>Cinclosoma castanotum</i>	437	<i>C. castanotus</i>
Cinnamon Quail-thrush	<i>Cinclosoma cinnamomeum</i>	439	
Chestnut-breasted Quail-thrush	<i>Cinclosoma castaneothorax</i>	438	
Eastern Whipbird	<i>Psophodes olivaceus</i>	421	
Western Whipbird	<i>Psophodes nigrogularis</i>	422	
Chirruping Wedgebill	<i>Psophodes cristatus</i>	866	
Chiming Wedgebill	<i>Psophodes occidentalis</i>	865	
<b>Neosittidae</b>			
Varied Sittella	<i>Daphoenositta chrysoptera</i>	549	





<b>Campephagidae</b>			
Ground Cuckoo-shrike	<i>Coracina maxima</i>	423	
Black-faced Cuckoo-shrike	<i>Coracina novaehollandiae</i>	424	
White-bellied Cuckoo-shrike	<i>Coracina papuensis</i>	425	
Barred Cuckoo-shrike	<i>Coracina lineata</i>	428	
Cicadabird	<i>Coracina tenuirostris</i>	429	
White-winged Triller	<i>Lalage sueurii</i>	430	
Varied Triller	<i>Lalage leucomela</i>	431	
Long-tailed Triller <sup>NE</sup>	<i>Lalage leucopyga</i>	962	
<b>Pachycephalidae</b>			
Crested Shrike-tit	<i>Falcunculus frontatus</i>	416	
Olive Whistler	<i>Pachycephala olivacea</i>	405	
Red-lored Whistler	<i>Pachycephala rufogularis</i>	402	
Gilbert's Whistler	<i>Pachycephala inomata</i>	403	
Golden Whistler	<i>Pachycephala pectoralis</i>	398	
Mangrove Golden Whistler	<i>Pachycephala melanura</i>	400	
Grey Whistler	<i>Pachycephala simplex</i>	406	
Rufous Whistler	<i>Pachycephala rufiventris</i>	401	
White-breasted Whistler	<i>Pachycephala lanioides</i>	404	
Little Shrike-thrush	<i>Colluricincla megarhyncha</i>	413	
Bower's Shrike-thrush	<i>Colluricincla boweri</i>	414	
Sandstone Shrike-thrush	<i>Colluricincla woodwardi</i>	411	
Grey Shrike-thrush	<i>Colluricincla harmonica</i>	408	
Crested Bellbird	<i>Oreoica gutturalis</i>	419	
<b>Oriolidae</b>			
Australasian Figbird	<i>Sphecotheres vieilloti</i>	432	treated as conspecific with Figbird <i>S. virdis</i>
Yellow Oriole	<i>Oriolus flavocinctus</i>	672	
Olive-backed Oriole	<i>Oriolus sagittatus</i>	671	
<b>Artamidae</b>			
White-breasted Woodswallow	<i>Artamus leucorhynchus</i>	543	
Masked Woodswallow	<i>Artamus personatus</i>	544	
White-browed Woodswallow	<i>Artamus superciliosus</i>	545	
Black-faced Woodswallow	<i>Artamus cinereus</i>	546	
Dusky Woodswallow	<i>Artamus cyanopterus</i>	547	



Little Woodswallow	<i>Artamus minor</i>	548	
Black Butcherbird	<i>Cracticus quoyi</i>	701	
Grey Butcherbird	<i>Cracticus torquatus</i>	702	
Black-backed Butcherbird	<i>Cracticus mentalis</i>	704	
Pied Butcherbird	<i>Cracticus nigrogularis</i>	700	
Australian Magpie	<i>Cracticus tibicen</i>	705	<i>Gymnorhina</i>
Pied Currawong	<i>Strepera graculina</i>	694	
Black Currawong	<i>Strepera fuliginosa</i>	696	
Grey Currawong	<i>Strepera versicolor</i>	697	
<b>Dicruridae</b>			
Spangled Drongo	<i>Dicrurus bracteatus</i>	673	
<b>Rhipiduridae</b>			new family; split from Dicruridae
Rufous Fantail	<i>Rhipidura rufifrons</i>	362	
Arafura Fantail	<i>Rhipidura dryas</i>	718	treated as conspecific with Rufous Fantail <i>R. rufifrons</i>
New Zealand Fantail <sup>LNE</sup>	<i>Rhipidura fuliginosa</i>	719	treated as conspecific with Grey Fantail <i>R. fuliginosa</i>
Grey Fantail	<i>Rhipidura albiscapa</i>	361	treated as conspecific with Grey Fantail <i>R. fuliginosa</i>
Mangrove Grey Fantail	<i>Rhipidura phasiana</i>	826	
Northern Fantail	<i>Rhipidura rufiventris</i>	363	
Willie Wagtail	<i>Rhipidura leucophrys</i>	364	
<b>Laniidae</b>			family added to Australian list
Brown Shrike <sup>CV</sup>	<i>Lanius cristatus</i>	734	supplementary list
Tiger Shrike <sup>V</sup>	<i>Lanius tigrinus</i>		not on list
<b>Corvidae</b>			
Black-billed Magpie <sup>V</sup>	<i>Pica pica</i>		not on list
Australian Raven	<i>Corvus coronoides</i>	930	
Forest Raven	<i>Corvus tasmanicus</i>	868	
Little Raven	<i>Corvus mellori</i>	954	
Little Crow	<i>Corvus bennetti</i>	691	
Torresian Crow	<i>Corvus orru</i>	692	
House Crow	<i>Corvus splendens</i>	867	supplementary list
<b>Monarchidae</b>			new family; split from Dicruridae
Broad-billed Flycatcher	<i>Myiagra ruficollis</i>	367	
Leaden Flycatcher	<i>Myiagra rubecula</i>	365	
Satin Flycatcher	<i>Myiagra cyanoleuca</i>	366	



Shining Flycatcher	<i>Myiagra alecto</i>	372	
Restless Flycatcher	<i>Myiagra inquieta</i>	728	
White-eared Monarch	<i>Cartemornis leucotis</i>	376	<i>Monarcha</i>
Black-faced Monarch	<i>Monarcha melanopsis</i>	373	
Black-winged Monarch	<i>Monarcha frater</i>	374	
Island Monarch <sup>AV</sup>	<i>Monarcha cinerascens</i>		not on list
Spectacled Monarch	<i>Symposiarchus trivirgatus</i>	375	<i>Monarcha</i>
Maggie-lark	<i>Grallina cyanoleuca</i>	415	
Friiled Monarch	<i>Arses telescopthalmus</i>	371	
Pied Monarch	<i>Arses kaupi</i>	370	
Yellow-breasted Boatbill	<i>Machaerirhynchus flaviventer</i>	368	
<b>Corcoracidae</b>			
White-winged Chough	<i>Corcorax melanorhamphos</i>	693	
Apostlebird	<i>Struthidea cinerea</i>	675	
<b>Paradisaeidae</b>			
Trumpet Manucode	<i>Phonygamus keraudrenii</i>	689	<i>Manucodia</i>
Paradise Riflebird	<i>Ptiloris paradiseus</i>	686	
Victoria's Riflebird	<i>Ptiloris victoriae</i>	687	
Magnificent Riflebird	<i>Ptiloris magnificus</i>	688	
<b>Petroicidae</b>			
Jacky Winter	<i>Microeca fascinans</i>	377	
Lemon-bellied Flycatcher	<i>Microeca flavigaster</i>	379	
Yellow-legged Flycatcher	<i>Microeca griseocephala</i>	395	
Pacific Robin	<i>Petroica multicolor</i>	714	treated as conspecific with <i>Scarlet Robin P. multicolor</i>
Scarlet Robin	<i>Petroica boodang</i>	380	treated as conspecific with <i>Scarlet Robin P. multicolor</i>
Red-capped Robin	<i>Petroica goodenovii</i>	381	
Flame Robin	<i>Petroica phoenicea</i>	382	
Rose Robin	<i>Petroica rosea</i>	384	
Pink Robin	<i>Petroica rodinogaster</i>	383	
Hooded Robin	<i>Melanodryas cucullata</i>	385	
Dusky Robin	<i>Melanodryas vittata</i>	386	
Pale-yellow Robin	<i>Tregellasia capito</i>	396	
White-faced Robin	<i>Tregellasia leucops</i>	397	
Eastern Yellow Robin	<i>Eopsaltria australis</i>	392	



Western Yellow Robin	<i>Eopsaltria griseogularis</i>	394	
White-breasted Robin	<i>Eopsaltria georgiana</i>	387	
Mangrove Robin	<i>Peneonanthe pulverulenta</i>	388	<i>Eopsaltria</i>
Grey-headed Robin	<i>Heteromyias cinereifrons</i>	389	treated as conspecific with Grey-headed Robin <i>H. albispecularis</i>
White-browed Robin	<i>Poecilodryas superciliosa</i>	390	
Buff-sided Robin	<i>Poecilodryas cerviniventris</i>	391	treated as conspecific with White-browed Robin <i>P. superciliosa</i>
Northern Scrub-robin	<i>Drymodes superciliaris</i>	442	
Southern Scrub-robin	<i>Drymodes brunneopygia</i>	441	
<b>Alaudidae</b>			
Horsfield's Bushlark	<i>Mirafra javanica</i>	648	Singing Bushlark
Eurasian Skylark <sup>I</sup>	<i>Alauda arvensis</i>	993	Skylark
<b>Cisticolidae</b>			new family; formerly included in Sylviidae
Zitting Cisticola	<i>Cisticola juncidus</i>	969	
Golden-headed Cisticola	<i>Cisticola exilis</i>	525	
<b>Acrocephalidae</b>			new family; formerly included in Sylviidae
Australian Reed-Warbler	<i>Acrocephalus australis</i>	524	treated as conspecific with Clamorous Reed-Warbler <i>A. stentoreus</i>
Oriental Reed-Warbler <sup>V</sup>	<i>Acrocephalus orientalis</i>	872	
<b>Megaluridae</b>			new family; formerly included in Sylviidae
Tawny Grassbird	<i>Megalurus timoriensis</i>	523	
Little Grassbird	<i>Megalurus gramineus</i>	522	
Rufous Songlark	<i>Cincloramphus mathewsi</i>	509	
Brown Songlark	<i>Cincloramphus cruralis</i>	508	
Spinifexbird	<i>Eremiornis carteri</i>	507	
<b>Timaliidae</b>			new family; formerly Zosteropidae
Christmas Island White-eye <sup>C,CKI</sup>	<i>Zosterops natalis</i>	956	
Pale White-eye	<i>Zosterops citrinella</i>	577	<i>Z. citrinellus</i>
Yellow White-eye	<i>Zosterops luteus</i>	576	
Silvereye	<i>Zosterops lateralis</i>	574	
Robust White-eye <sup>L,HE</sup>	<i>Zosterops strenuus</i>	943	
Slender-billed White-eye <sup>N</sup>	<i>Zosterops tenuirostris</i>	960	
White-chested White-eye <sup>WE?</sup>	<i>Zosterops albogularis</i>	961	
<b>Phylloscopidae</b>			new family; formerly included in Sylviidae
Arctic Warbler <sup>V,AV</sup>	<i>Phylloscopus borealis</i>	831	
<b>Hirundinidae</b>			



White-backed Swallow	<i>Cheramoeca leucosterna</i>	358	<i>C. leucostern us</i>
Barn Swallow	<i>Hirundo rustica</i>	879	
Welcome Swallow	<i>Hirundo neoxena</i>	357	
Fairy Martin	<i>Petrochelidon ariel</i>	360	<i>Hirundo</i>
Tree Martin	<i>Petrochelidon nigricans</i>	359	<i>Hirundo</i>
Red-rumped Swallow <sup>V,CV</sup>	<i>Cecropis daurica</i>	787	
Asian House Martin <sup>CV</sup>	<i>Delichon dasypus</i>	757	not on list
<b>Pycnonotidae</b>			
Red-whiskered Bulbul <sup>l</sup>	<i>Pycnonotus jocosus</i>	990	
<b>Muscicapidae</b>			
Blue Rock Thrush <sup>V</sup>	<i>Monticola solitarius</i>	723	not on list
Isabelline Wheatear <sup>V</sup>	<i>Oenanthe isabellina</i>	763	not on list
Narcissus Flycatcher <sup>V</sup>	<i>Ficedula narcissina</i>	725	not on list
Blue-and-White Flycatcher <sup>V,CV</sup>	<i>Cyanoptila cyanomelana</i>	726	not on list
<b>Turdidae</b>			new family; formerly included in Muscicapidae
Bassian Thrush	<i>Zoothera lunulata</i>	779	
Russet-tailed Thrush	<i>Zoothera heinei</i>	780	
Common Blackbird	<i>Turdus merula</i>	991	
Island Thrush <sup>CILHENE</sup>	<i>Turdus poliocephalus</i>	936	
Song Thrush <sup>l</sup>	<i>Turdus philomelos</i>	992	
<b>Sturnidae</b>			
Singing Starling <sup>TS</sup>	<i>Aplomis cantoroides</i>	724	<i>Aplonis</i> ; supplementary list
Tasman Starling <sup>NELHVE</sup>	<i>Aplomis fusca</i>	733	<i>Aplonis</i>
Metallic Starling	<i>Aplomis metallica</i>	674	<i>Aplonis</i>
Common Starling <sup>l</sup>	<i>Sturnus vulgaris</i>	999	
Purple-backed Starling <sup>CV</sup>	<i>Sturnus sturninus</i>	736	not on list
Rosy Starling <sup>V</sup>	<i>Sturnus roseus</i>		not on list
Common Myna <sup>l</sup>	<i>Sturnus tristis</i>	998	<i>Acridotheres</i>
<b>Nectariniidae</b>			
Red-capped Flowerpecker <sup>TS</sup>	<i>Dicaeum geelvinkianum</i>	751	not on list
Mistletoebird	<i>Dicaeum hirundinaceum</i>	564	
Olive-backed Sunbird	<i>Nectarinia jugularis</i>	572	<i>Yellow-bellied Sunbird</i>
<b>Estrildidae</b>			new family; formerly included in Passeridae
Zebra Finch	<i>Taeniopygia guttata</i>	653	



Double-barred Finch	<i>Taeniopygia bichenovii</i>	655	
Long-tailed Finch	<i>Poephila acuticauda</i>	666	
Black-throated Finch	<i>Poephila cincta</i>	667	
Masked Finch	<i>Poephila personata</i>	669	
Crimson Finch	<i>Neochmia phaeton</i>	664	
Star Finch	<i>Neochmia ruficauda</i>	663	
Plum-headed Finch	<i>Neochmia modesta</i>	661	
Red-browed Finch	<i>Neochmia temporalis</i>	662	
Diamond Firetail	<i>Stagonopleura guttata</i>	652	
Beautiful Firetail	<i>Stagonopleura bella</i>	650	
Red-eared Firetail	<i>Stagonopleura oculata</i>	651	
Painted Finch	<i>Emblema pictum</i>	654	
Blue-faced Parrot-Finch	<i>Erythrura trichroa</i>	660	
Gouldian Finch	<i>Erythrura gouldiae</i>	670	
Nutmeg Mannikin <sup>l</sup>	<i>Lonchura punctulata</i>	983	
Pale-headed Munia <sup>AV</sup>	<i>Lonchura pallida</i>	817	not on list
Yellow-rumped Mannikin	<i>Lonchura flaviprymna</i>	658	
Chestnut-breasted Mannikin	<i>Lonchura castaneothorax</i>	657	
Java Sparrow <sup>CI</sup>	<i>Lonchura oryzivora</i>	806	
Pictorella Mannikin	<i>Heteromunia pectoralis</i>	659	
<b>Passeridae</b>			
House Sparrow <sup>l</sup>	<i>Passer domesticus</i>	995	
Eurasian Tree Sparrow <sup>l</sup>	<i>Passer montanus</i>	994	
<b>Motacillidae</b>			
Australasian Pipit	<i>Anthus novaeseelandiae</i>	647	treated as conspecific with Richard's Pipit <i>A. novaeseelandiae</i>
Red-throated Pipit <sup>V</sup>	<i>Anthus cervinus</i>	766	
Pechora Pipit <sup>A</sup>	<i>Anthus gustavi</i>	758	supplementary list
Eastern Yellow Wagtail	<i>Motacilla tschutschensis</i>		treated as conspecific with Yellow Wagtail <i>M. flava</i>
Green-headed Yellow Wagtail	<i>Motacilla taivana</i>	8611	treated as conspecific with Yellow Wagtail <i>M. flava</i>
Citrine Wagtail <sup>V</sup>	<i>Motacilla citreola</i>	876	
Grey Wagtail <sup>V,C</sup>	<i>Motacilla cinerea</i>	875	
White Wagtail <sup>V</sup>	<i>Motacilla alba</i>	874	Black-backed Wagtail <i>M.a. lugens</i> treated as separate species
<b>Fringillidae</b>			
Common Chaffinch <sup>LHIV,NV</sup>	<i>Fringilla coelebs</i>	788	



European Goldfinch <sup>1</sup>	<i>Carduelis carduelis</i>	996	
Common Redpoll <sup>LHVM</sup>	<i>Acanthis flammea</i>	790	<i>Carduelis</i>
Common Greenfinch <sup>1</sup>	<i>Chloris chloris</i>	997	<i>Carduelis</i>
<b>Emberizidae</b>			
Yellowhammer <sup>LHV</sup>	<i>Emberiza citrinella</i>	789	

